

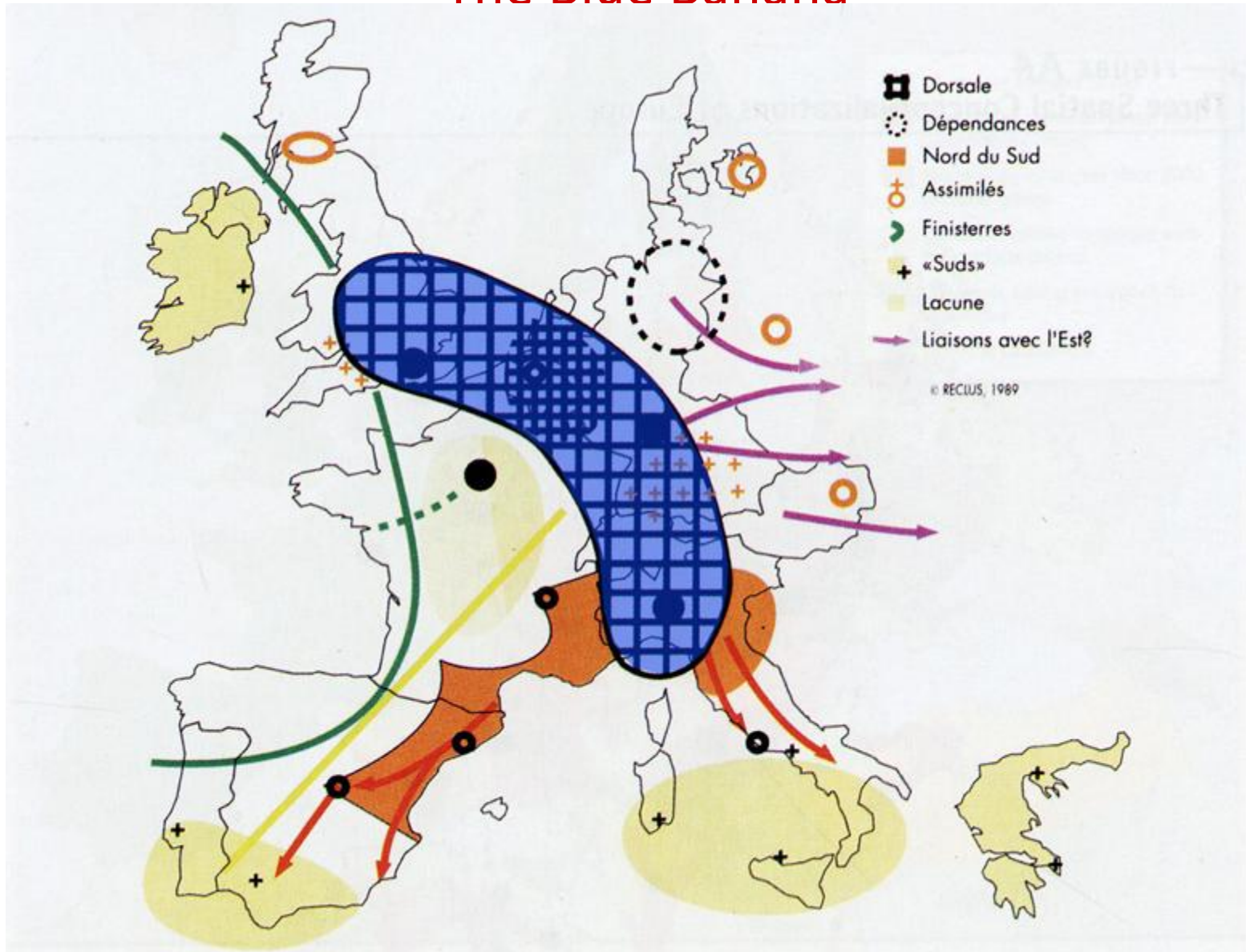
# Megaregions, Large Landscapes, and America's Great Outdoors: a Planning Synthesis

Wildlands and Woodlands Partnership  
Harvard Forest, Petersham, MA  
December 8, 2010

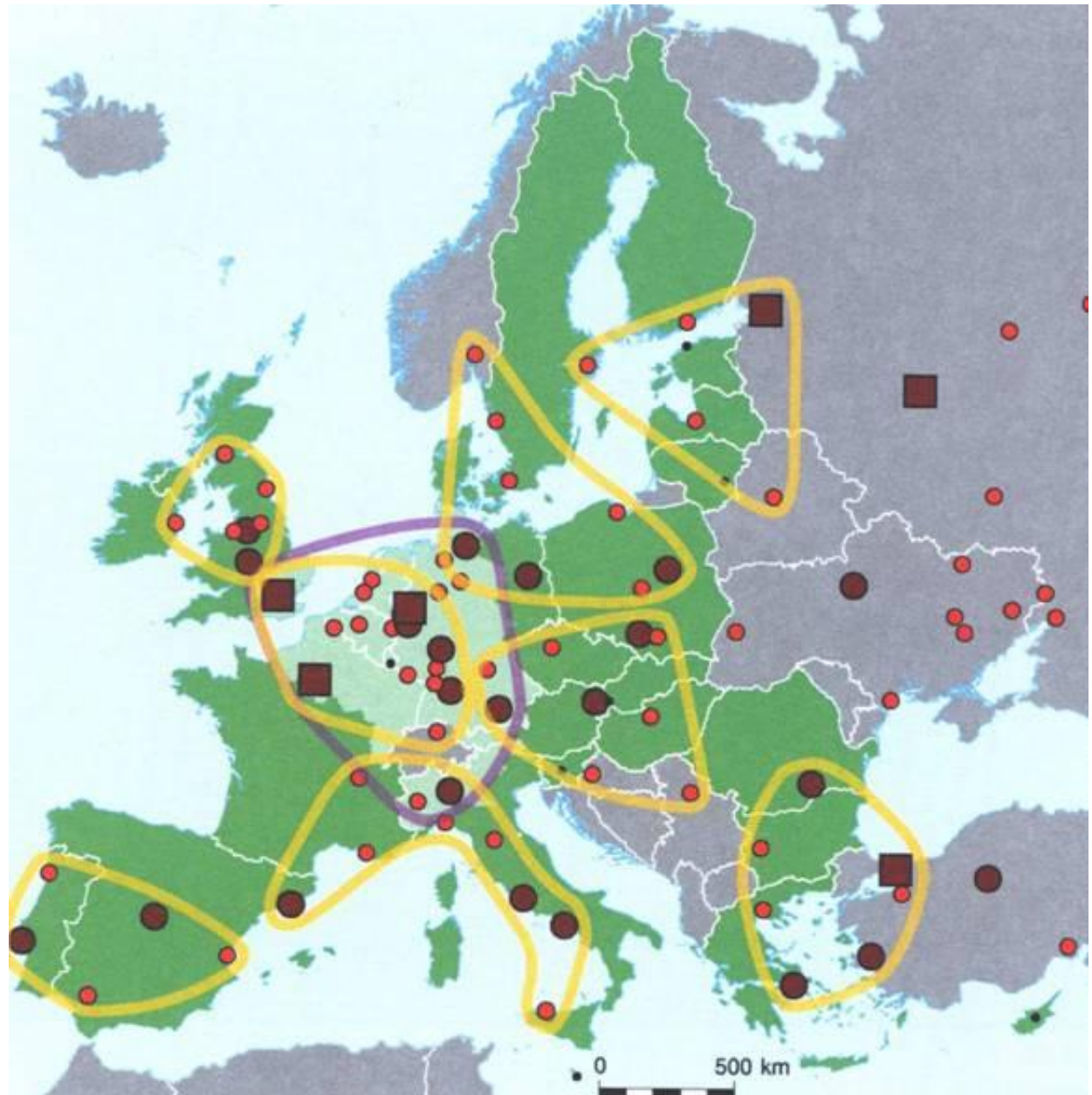
Armando Carbonell  
Chairman, Department of Planning and Urban Form  
Lincoln Institute of Land Policy

Precedents and early insights ...

# The Blue Banana



# European Mega-regions and Territorial Cohesion



*Credit: Lincoln Institute of Land Policy*

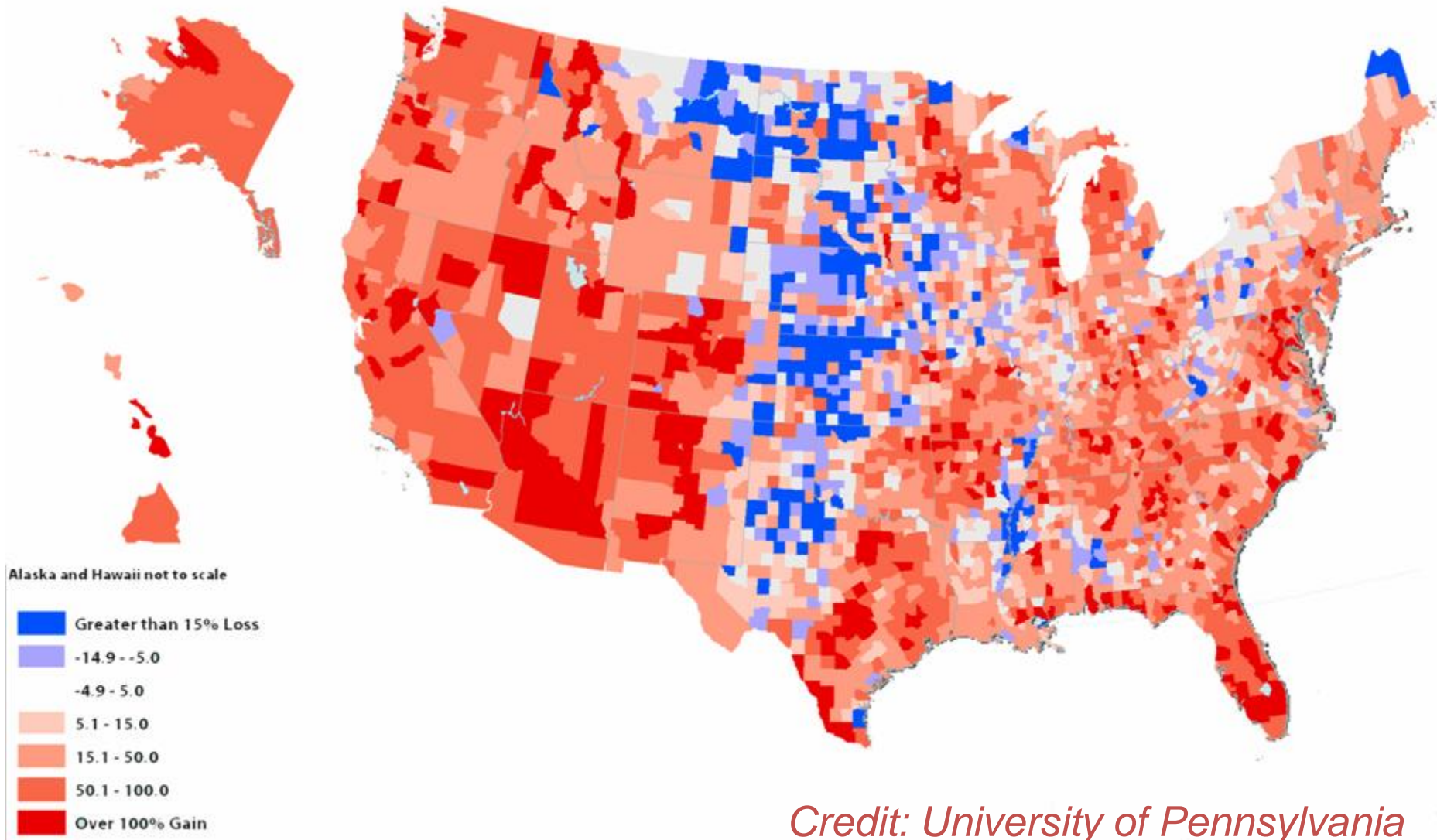
## HSR in the EU: 2020

Upgraded lines  
New lines



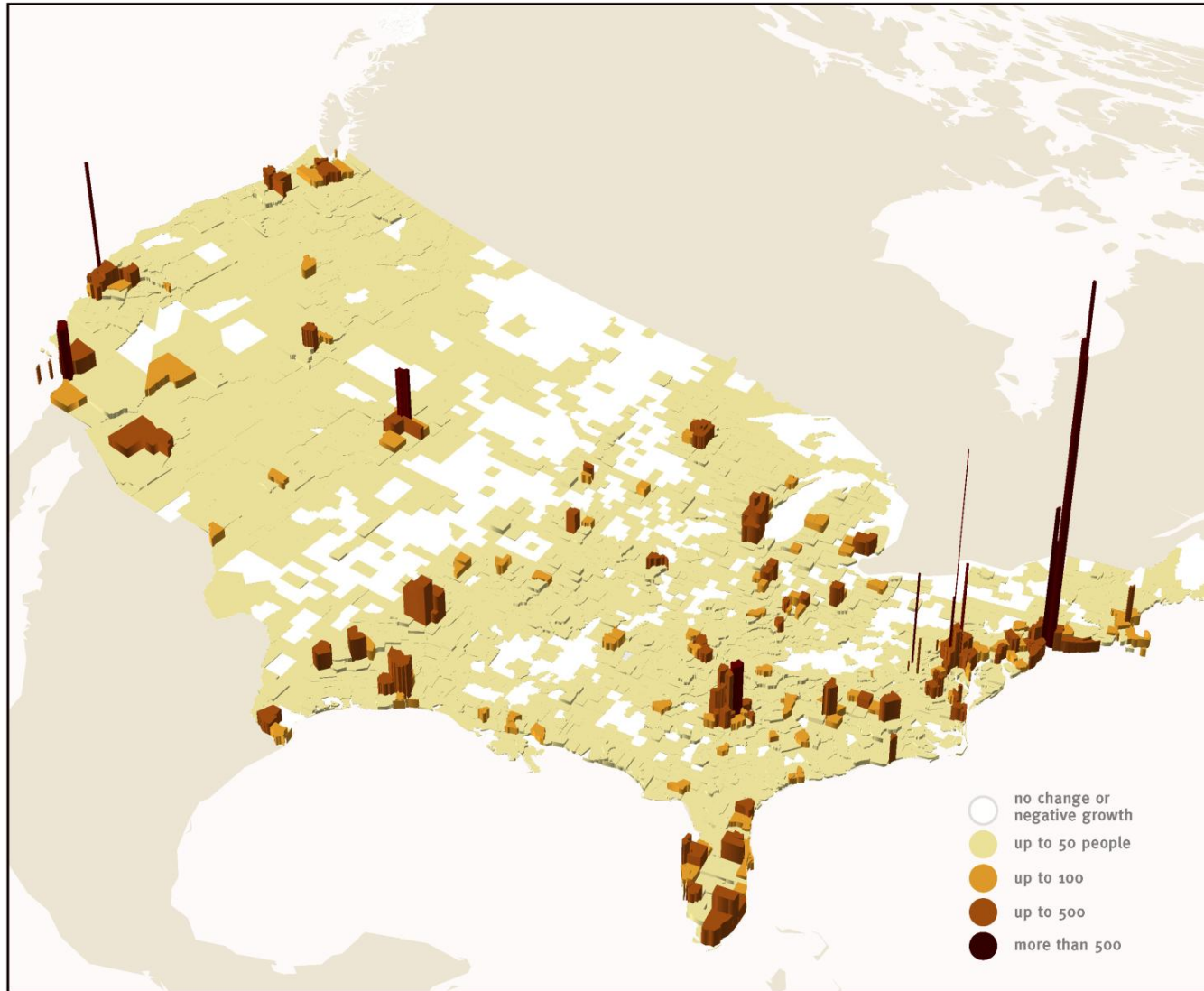


# U.S. Population Change 2005-2050



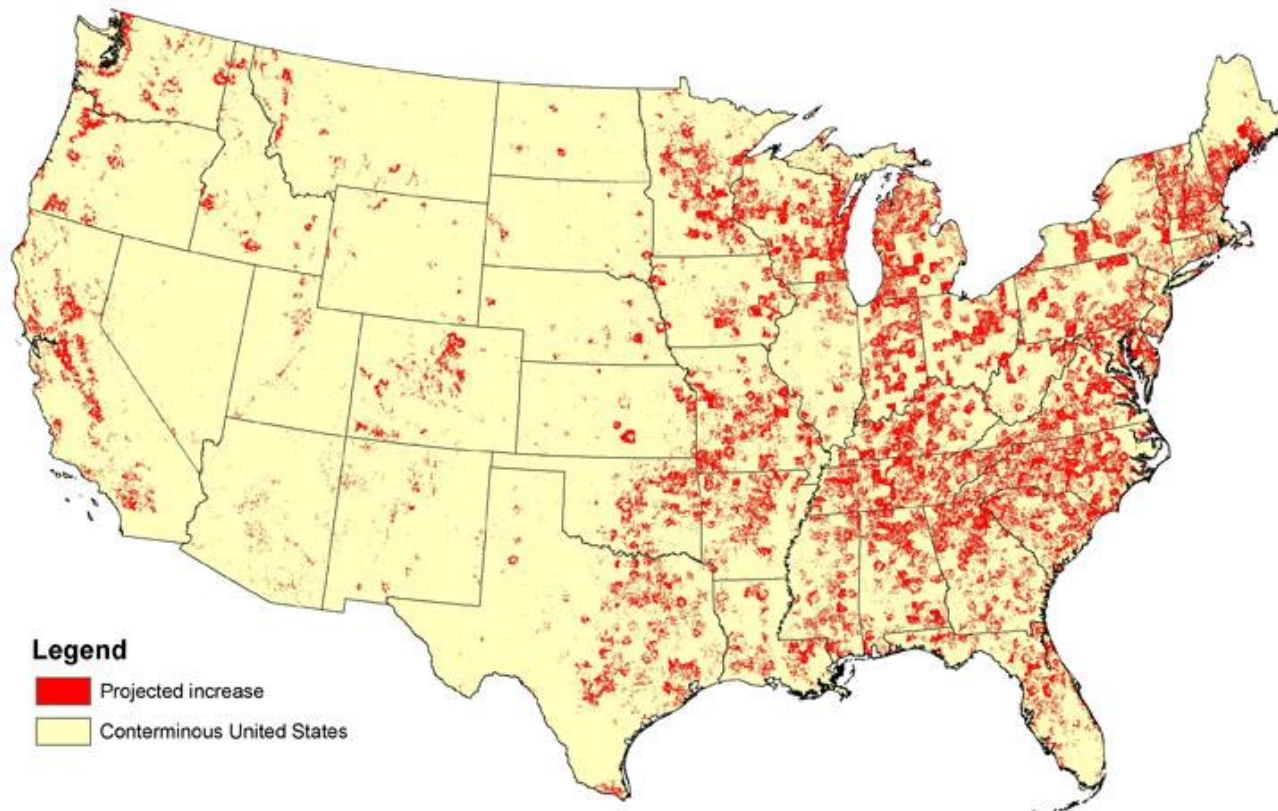
*Credit: University of Pennsylvania*

## Population Change per square mile, 1990-2000

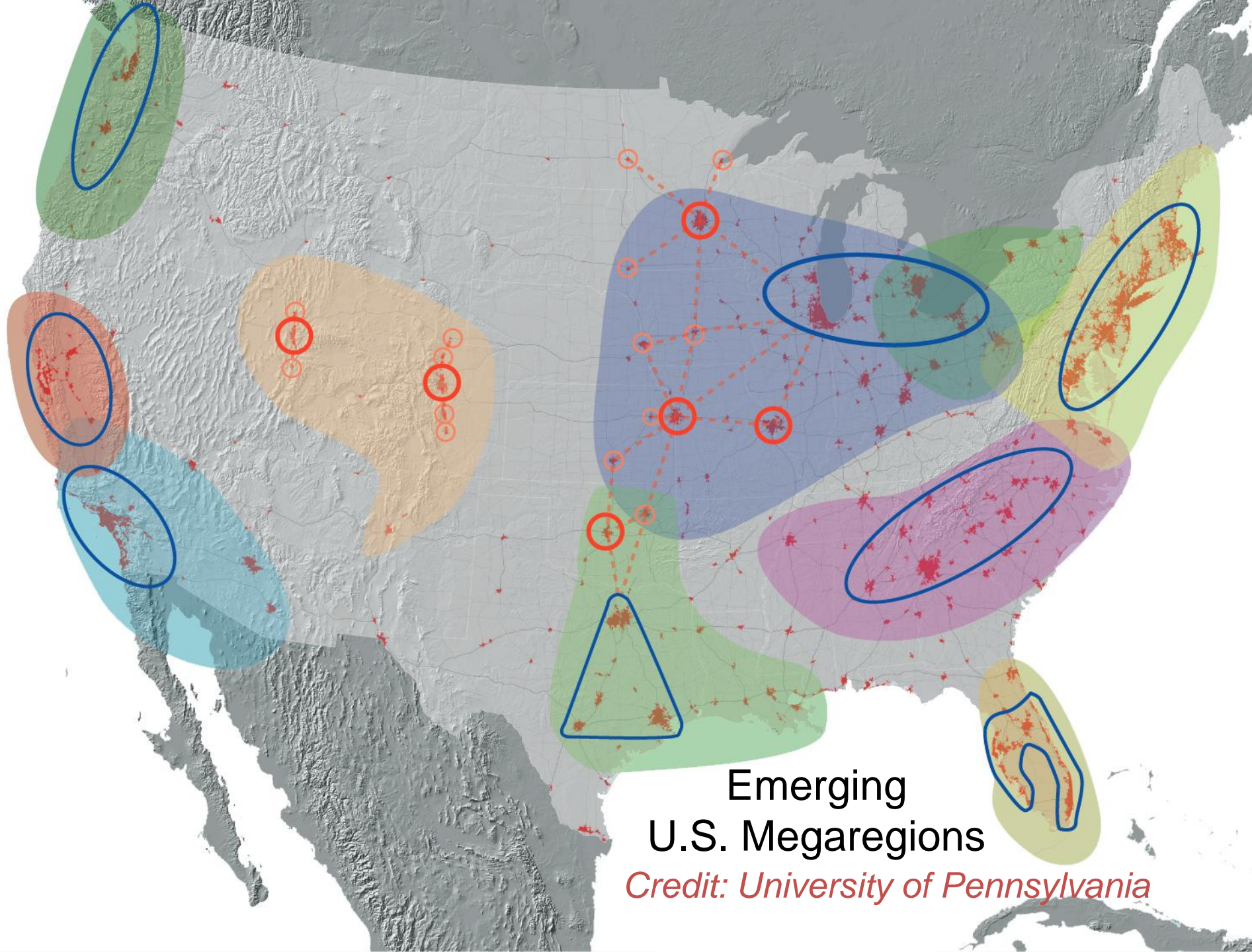


# Rural Areas Projected to Experience Increased Development, 2000-2030

Source: USFS Open Space Strategy







Emerging  
U.S. Megaregions

*Credit: University of Pennsylvania*

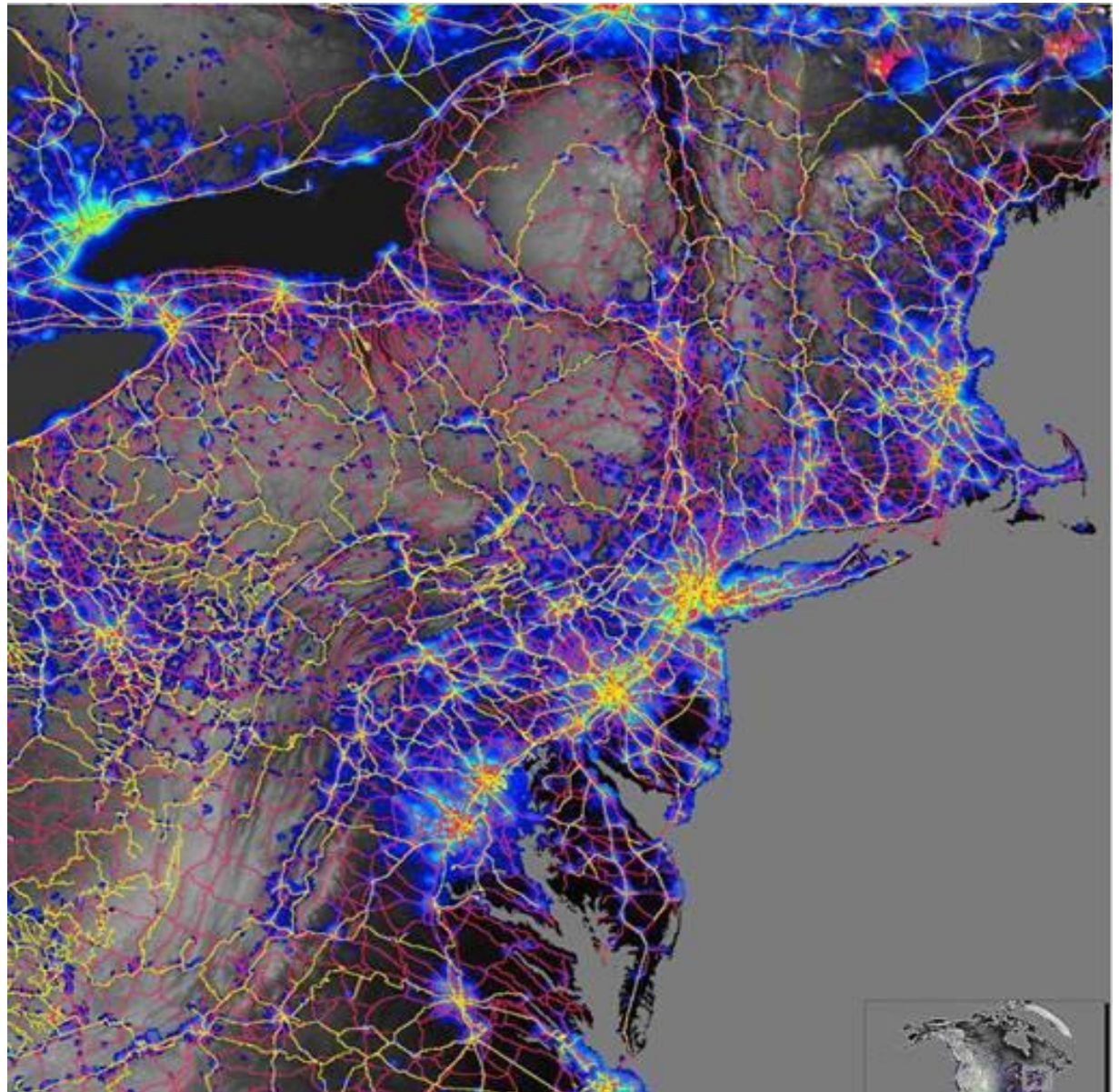
# Why Megaregions?



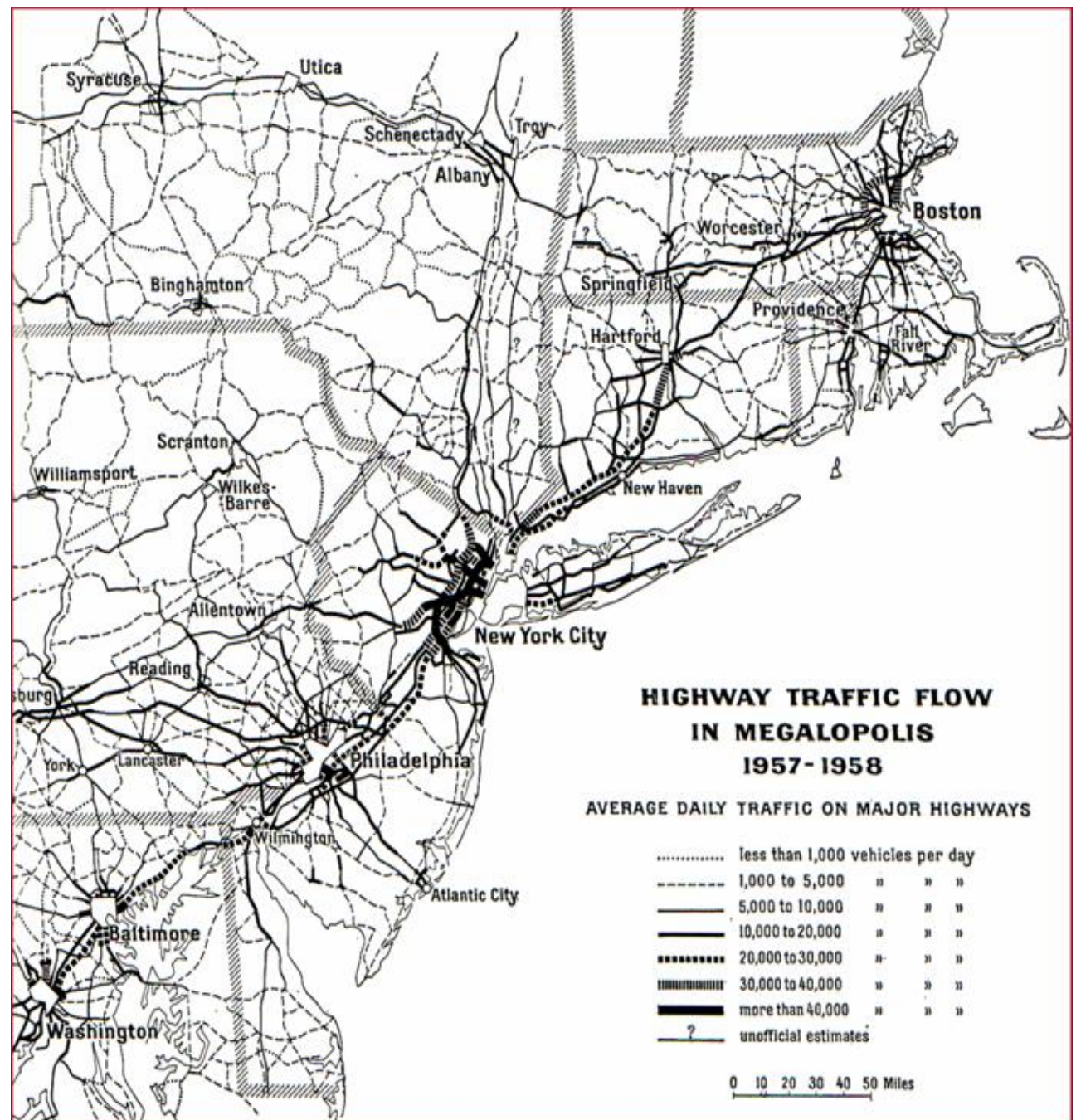
- Challenges occur at scale greater than metropolitan region
- Large infrastructure systems
- Large natural systems
- Building blocks to a national plan



# Northeast Megaregion

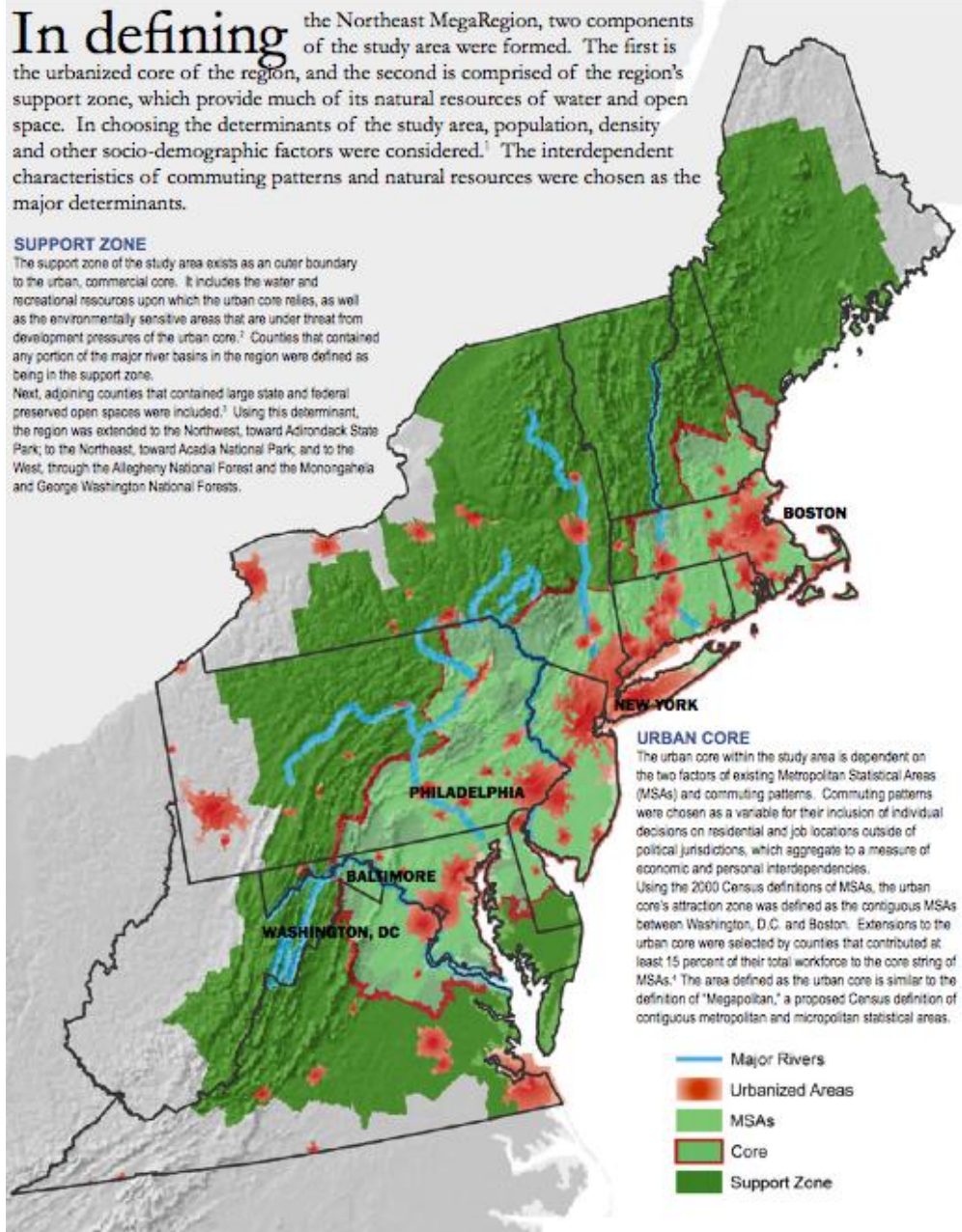


# Gottmann's Megalopolis

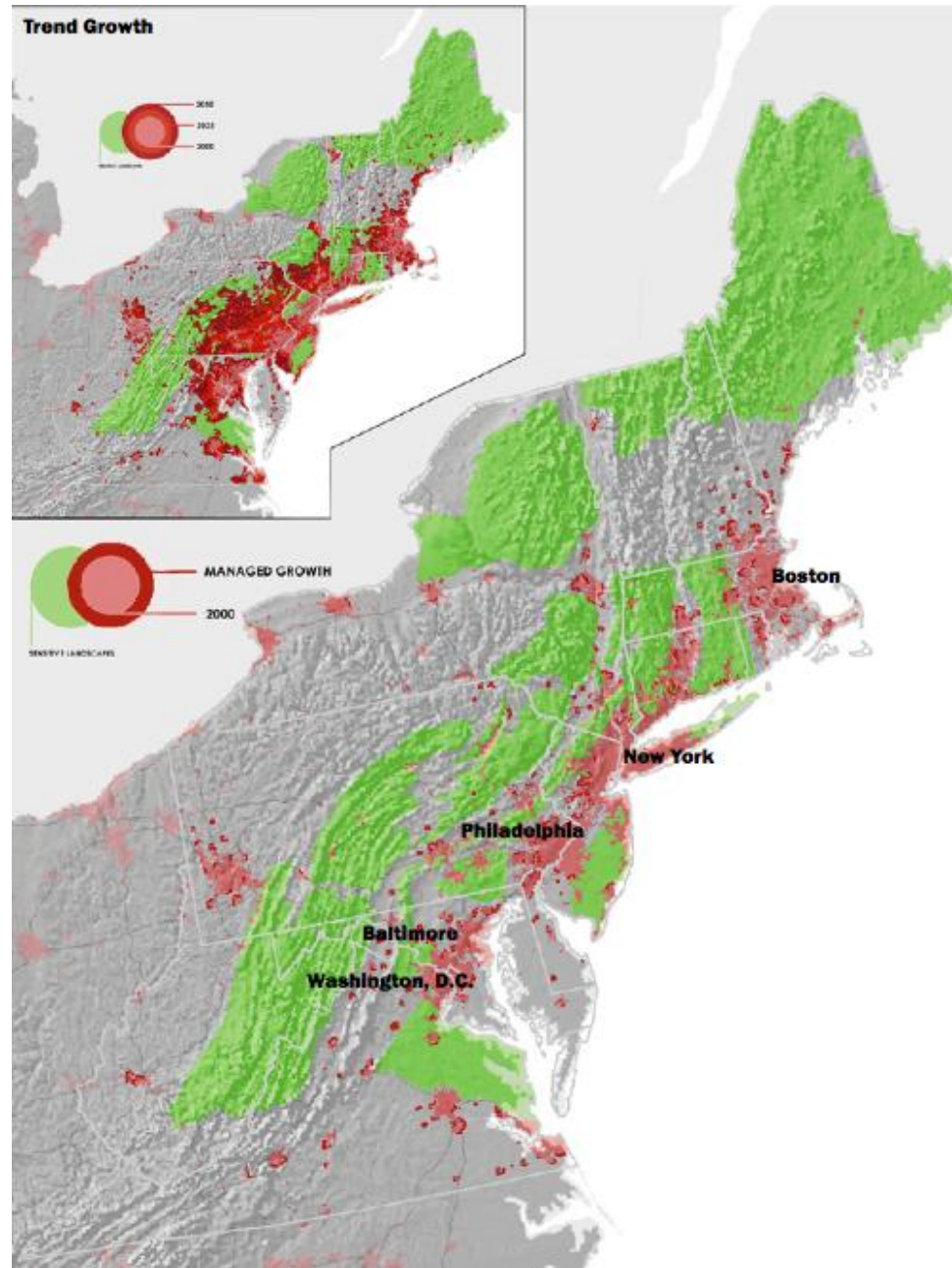




# Northeast Megaregion Ecostructure

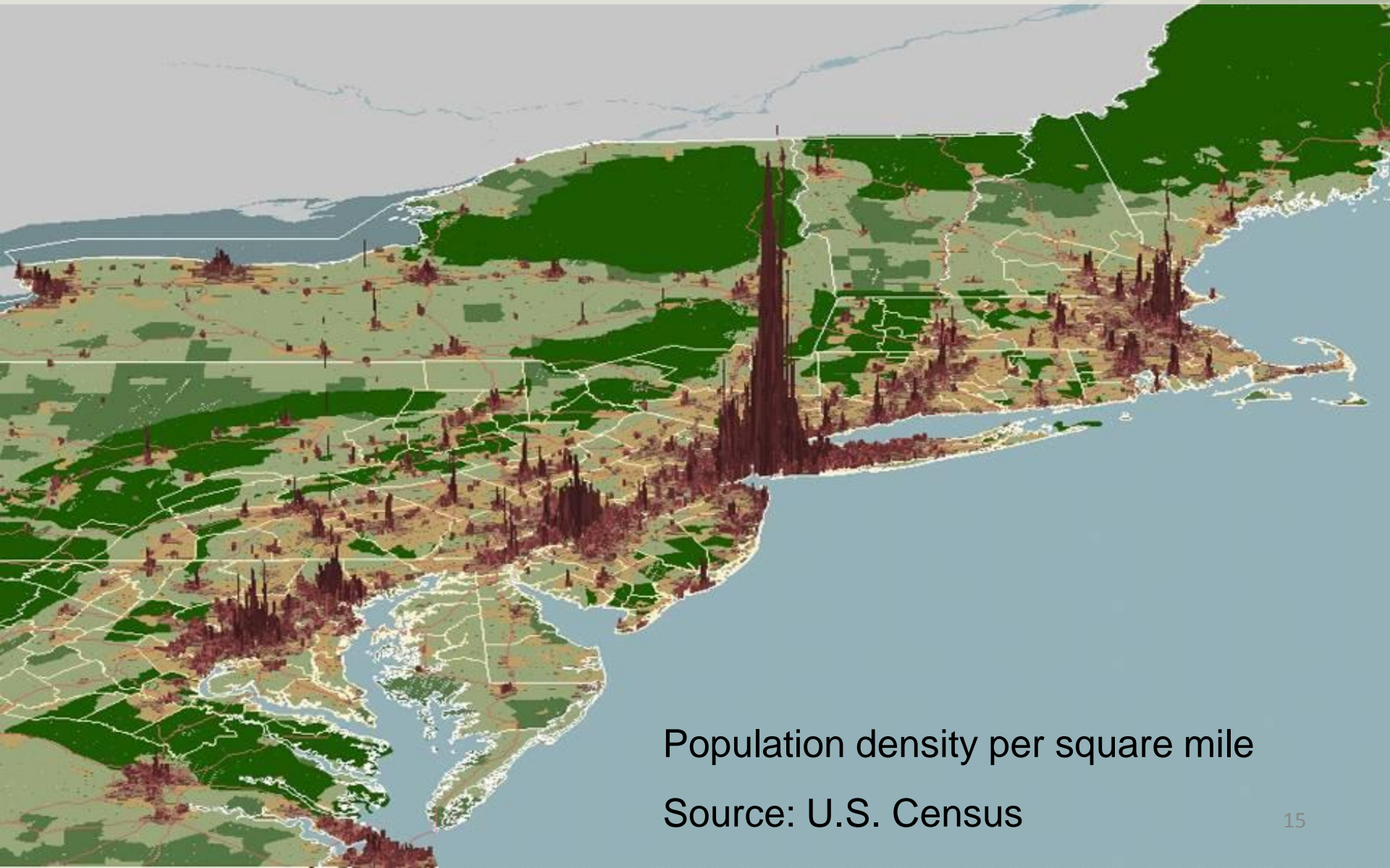


# Smart Growth vs. Trend Growth





# **Vision : Dense Hubs connected by high-speed transport**



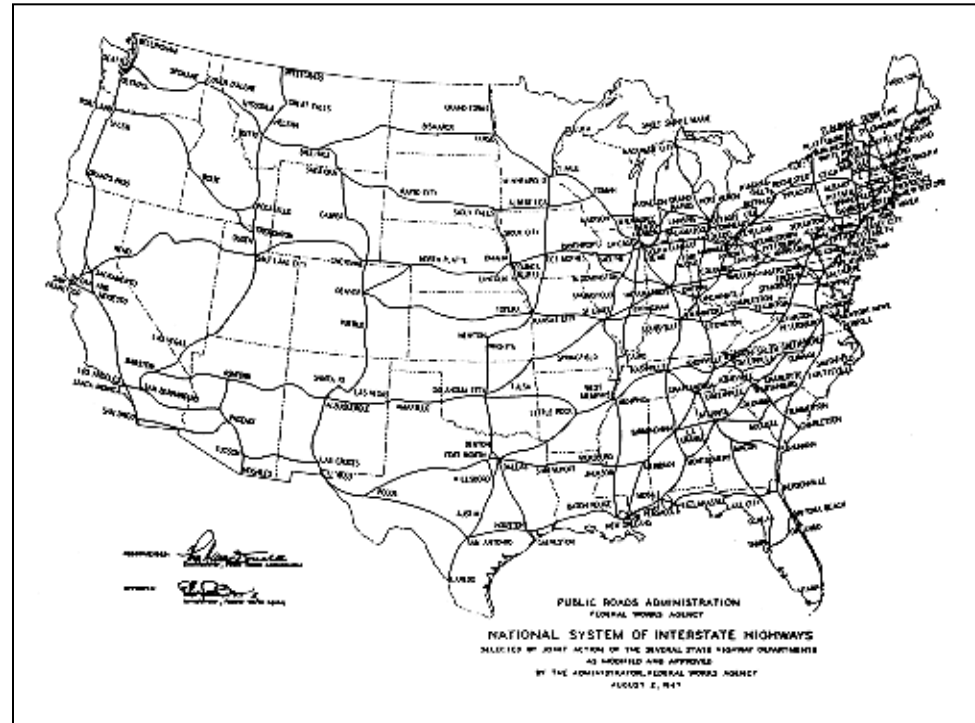
Population density per square mile

Source: U.S. Census

# National Resources Planning Board and the Interstate System

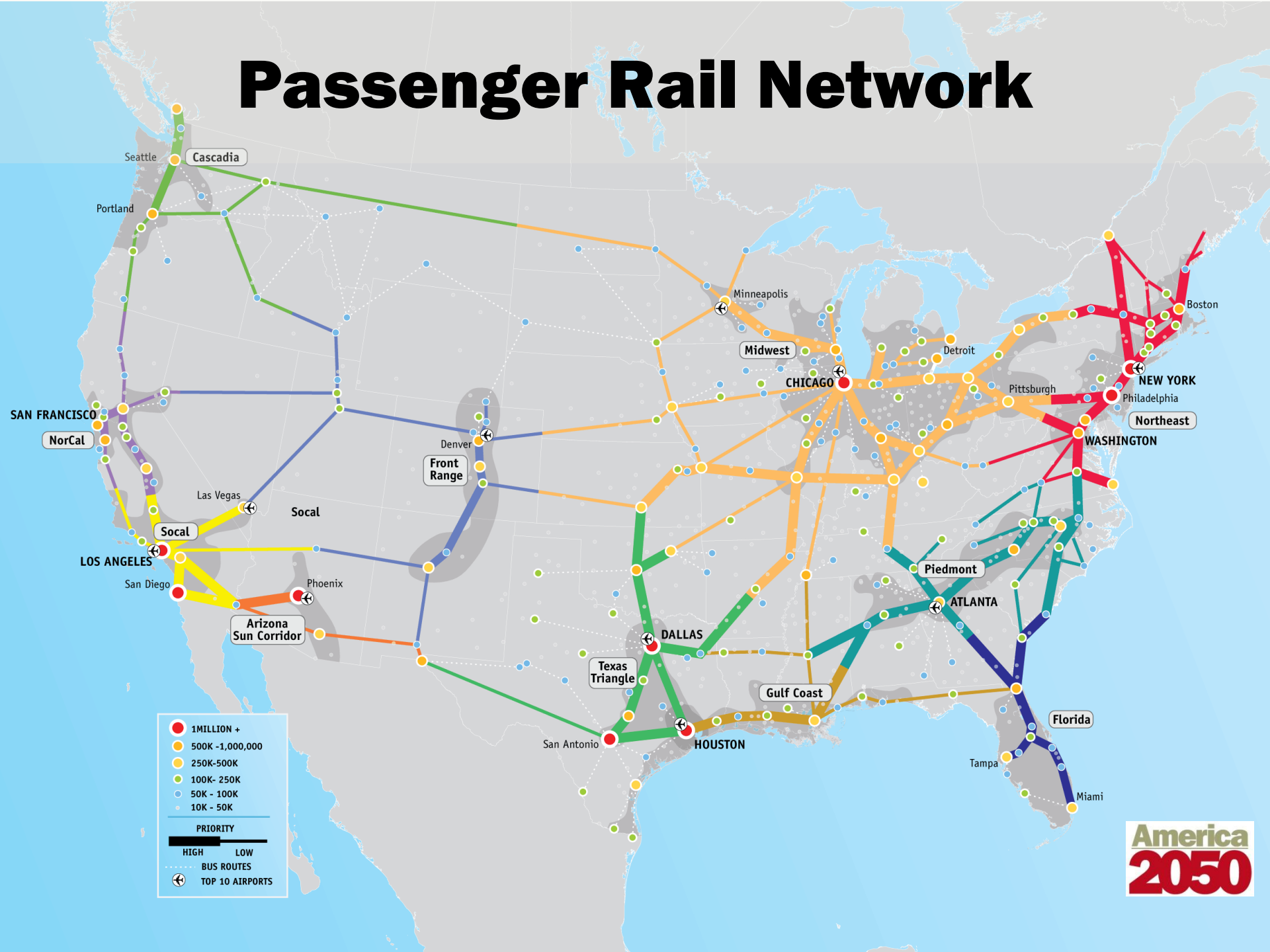


PLATE 57.—Location of existing routes tentatively selected as approximating the lines of a proposed interregional highway system.

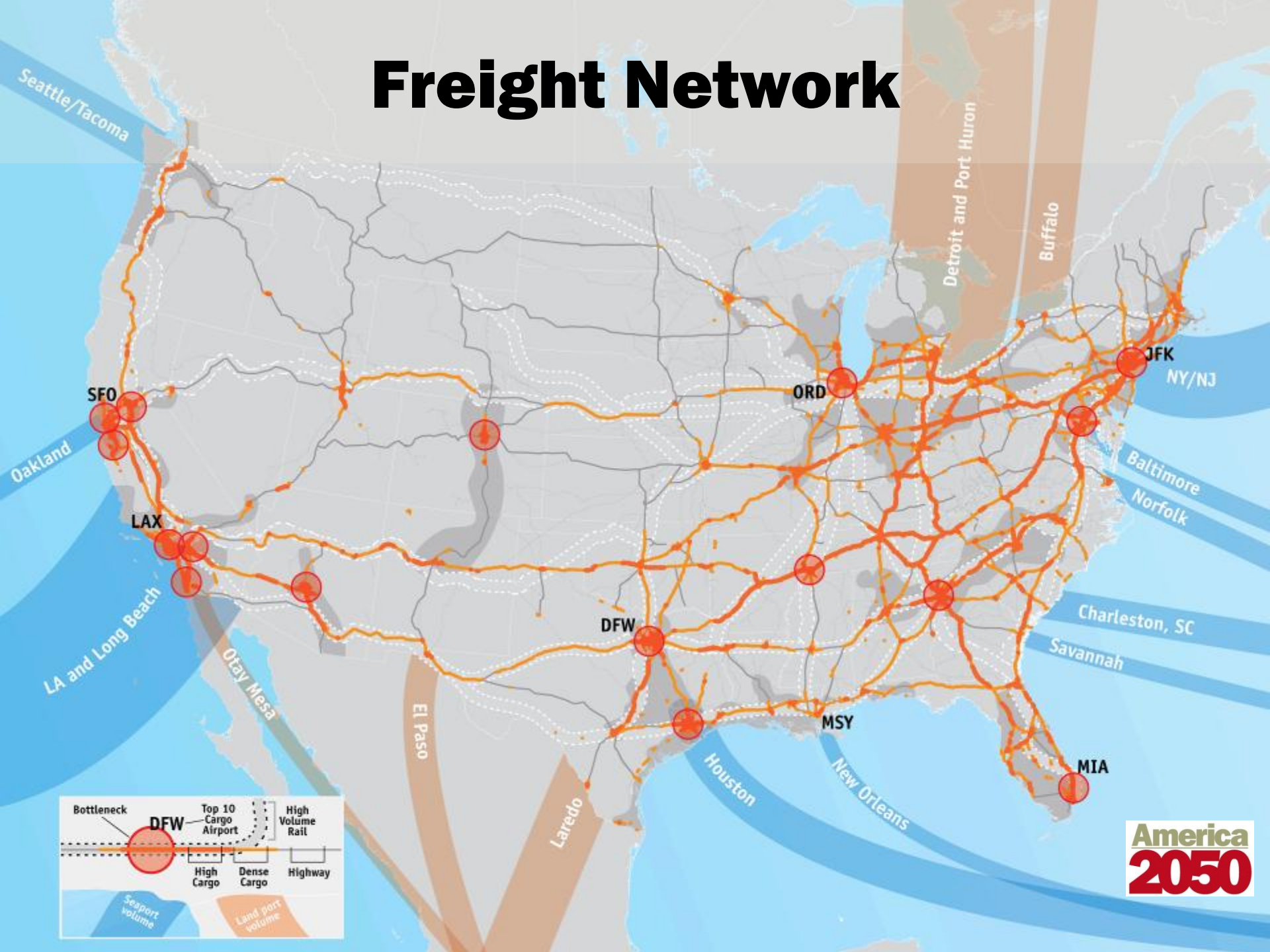




# Passenger Rail Network

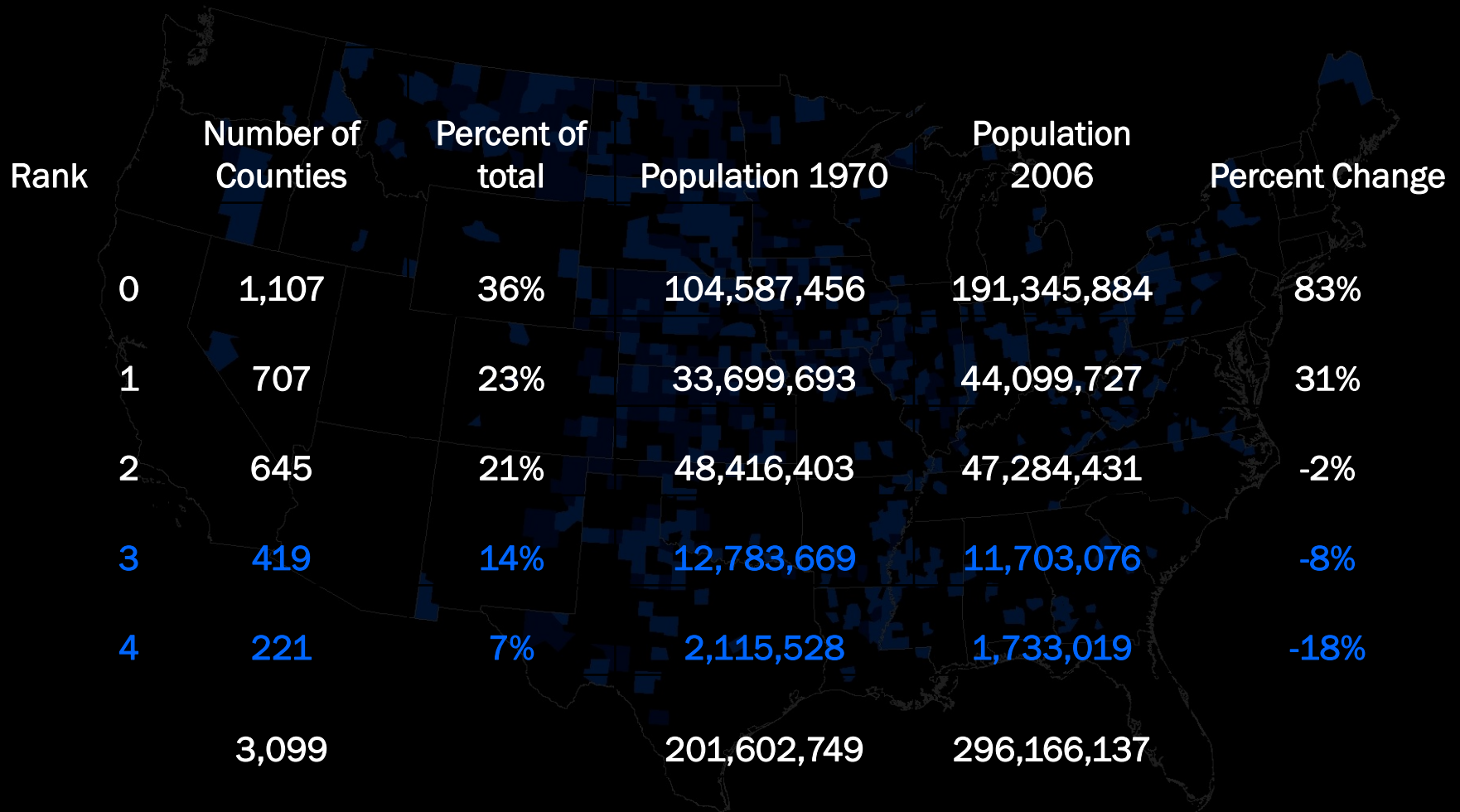


# Freight Network



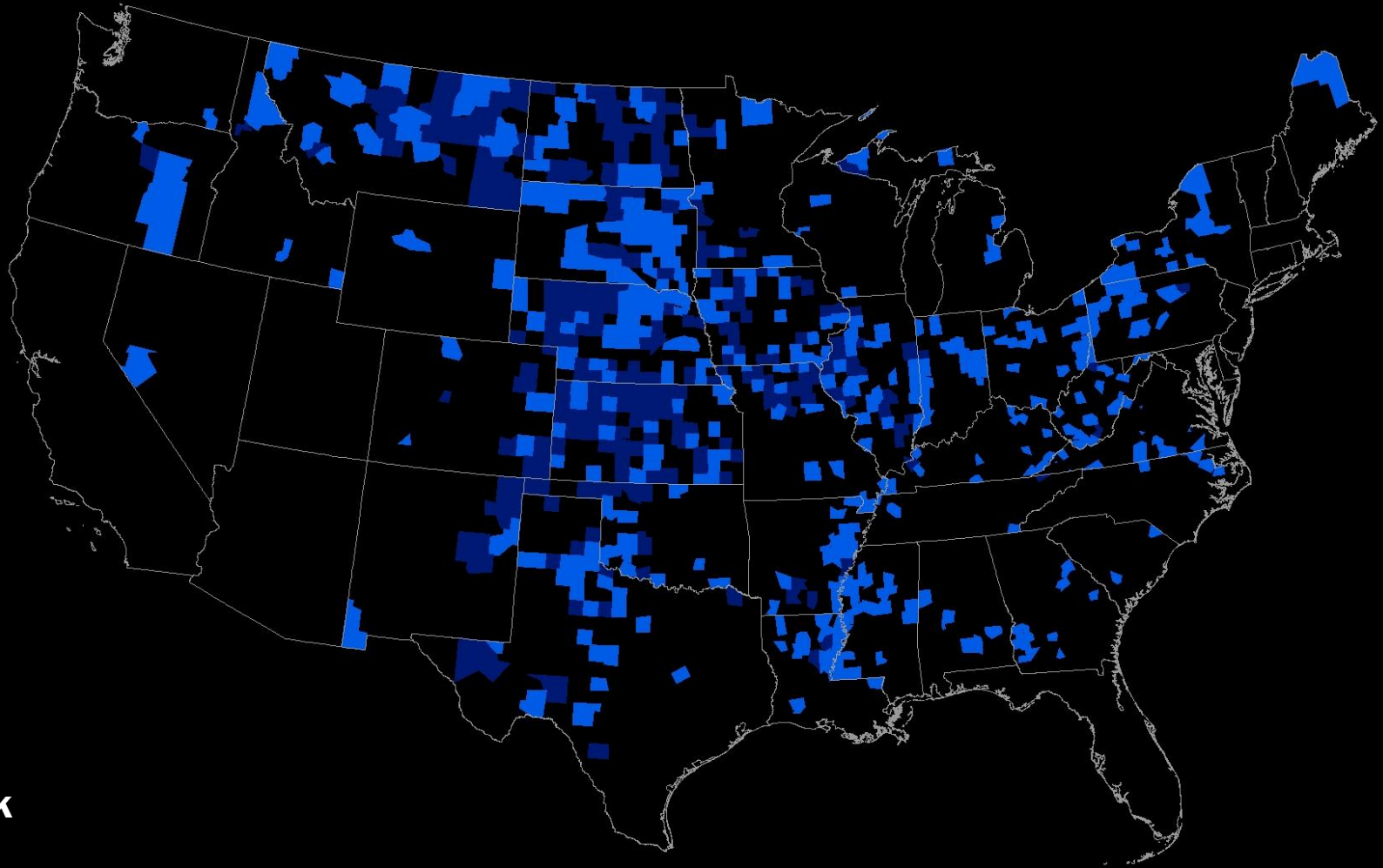
Shrinking cities and thinly  
populated places...

# Composite Index of Underperforming Characteristics





# Underperforming Counties

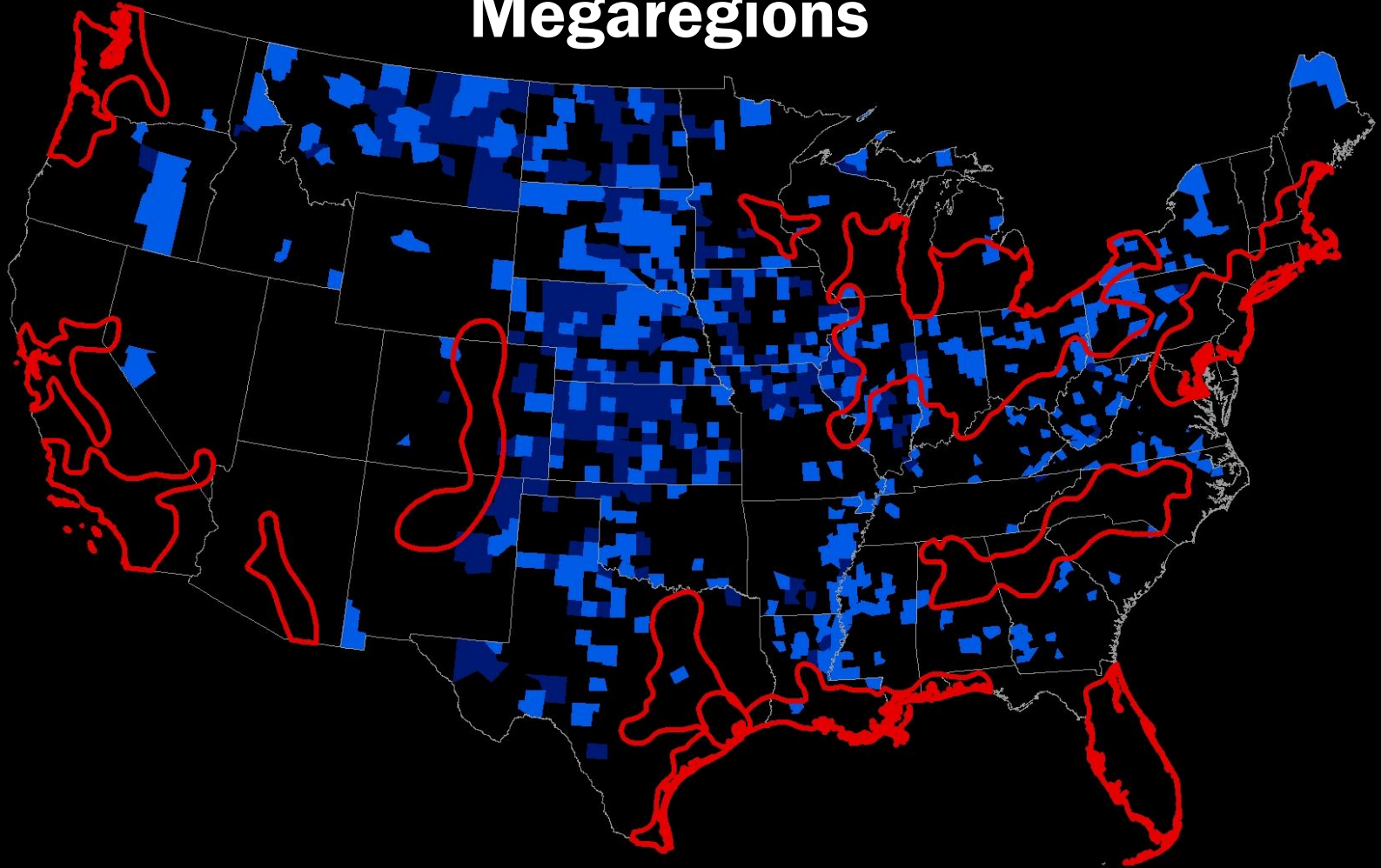


Rank

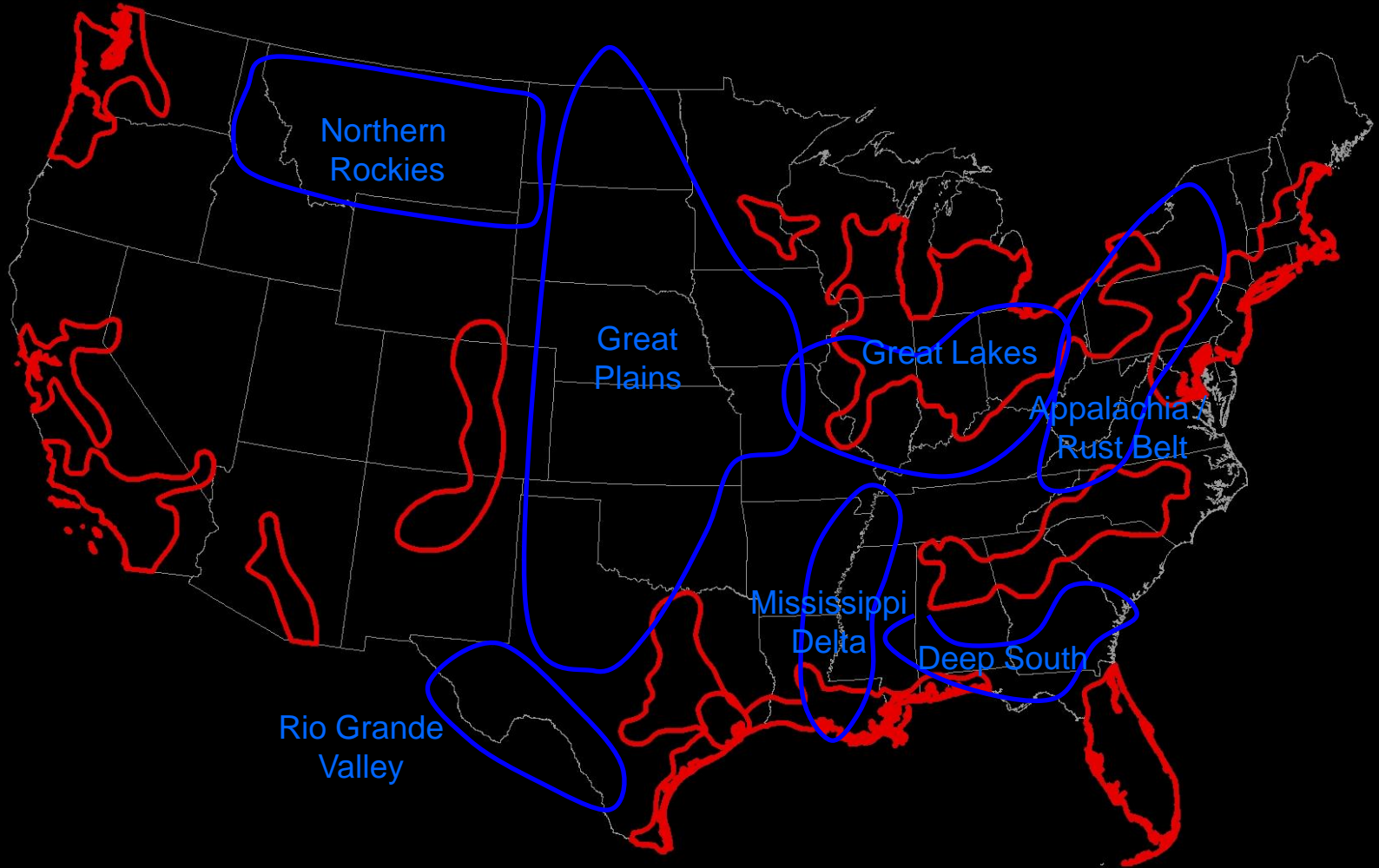
3

4

# **With the Exception of the Great Lakes Underperforming Counties are outside of the Megaregions**



# Seven Underperforming Regions Identified



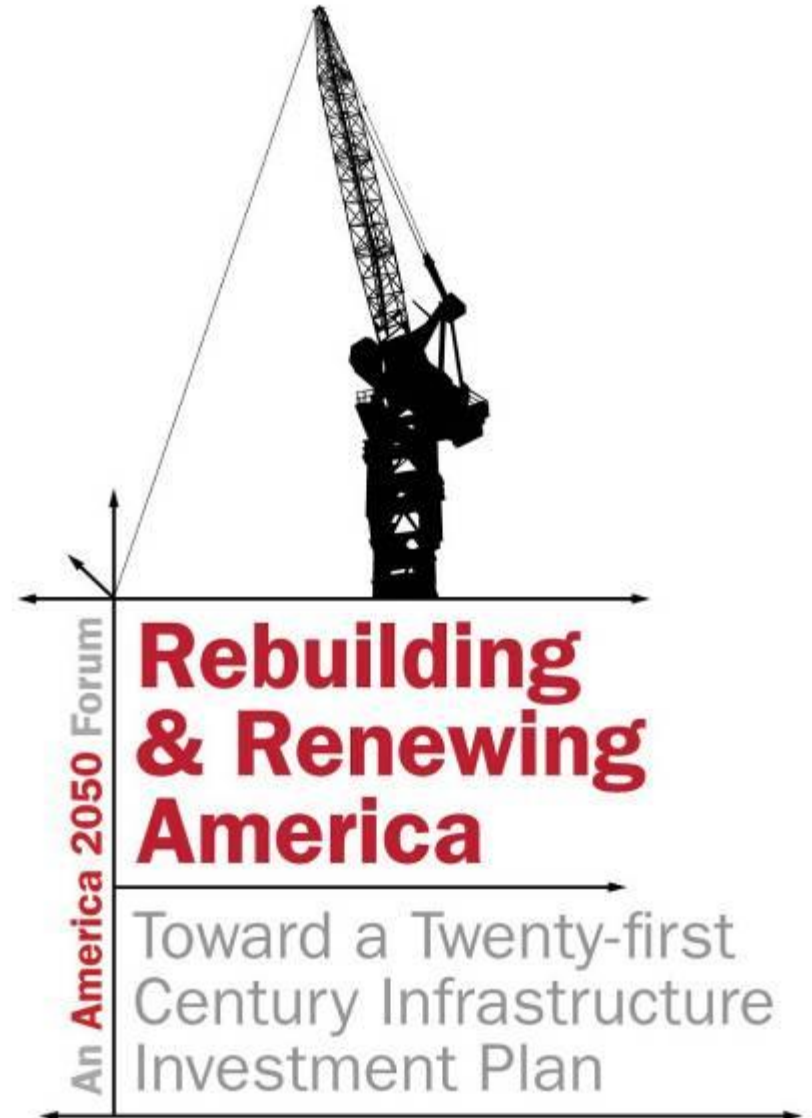
# Megaregion Forums to Set Priorities



Sacramento, Dec 2, 2008



Chicago, November 17, 2008





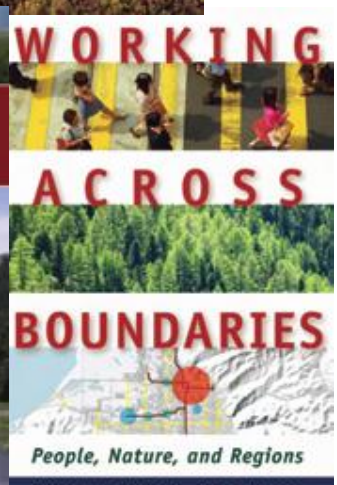
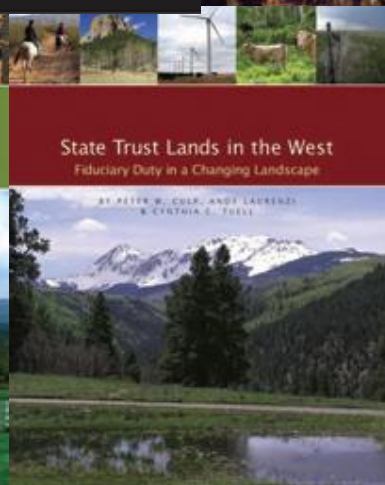
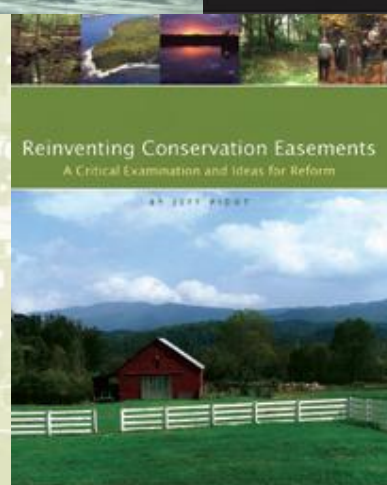
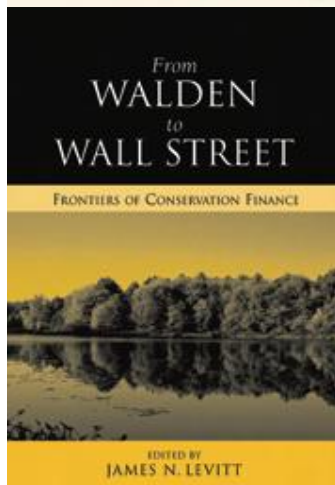
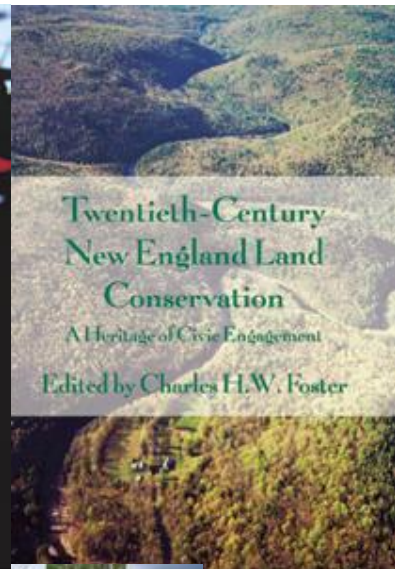
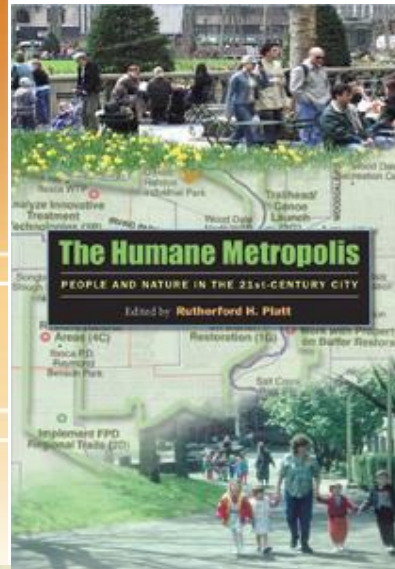
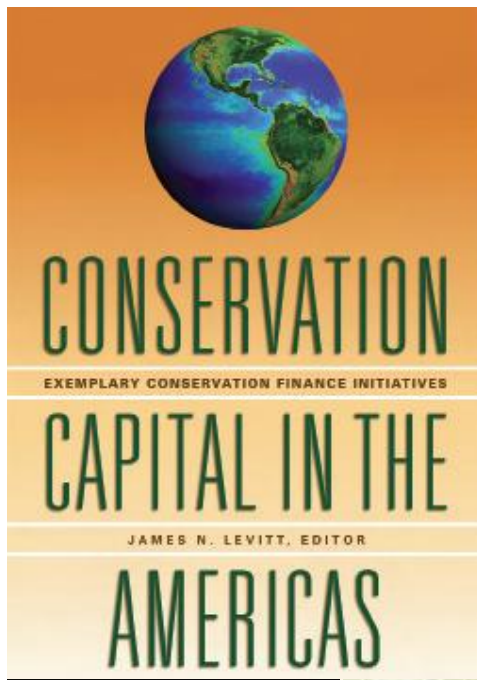


[www.America2050.org](http://www.America2050.org)



[www.rpa.org](http://www.rpa.org)

Wide open spaces...





Policy Focus Report • Lincoln Institute of Land Policy

## Large Landscape Conservation: A Strategic Framework for Policy and Action



MATTHEW MCKINNEY, LYNN SCARLETT, AND DANIEL KEMMOT

# 10 Most Endangered Rivers

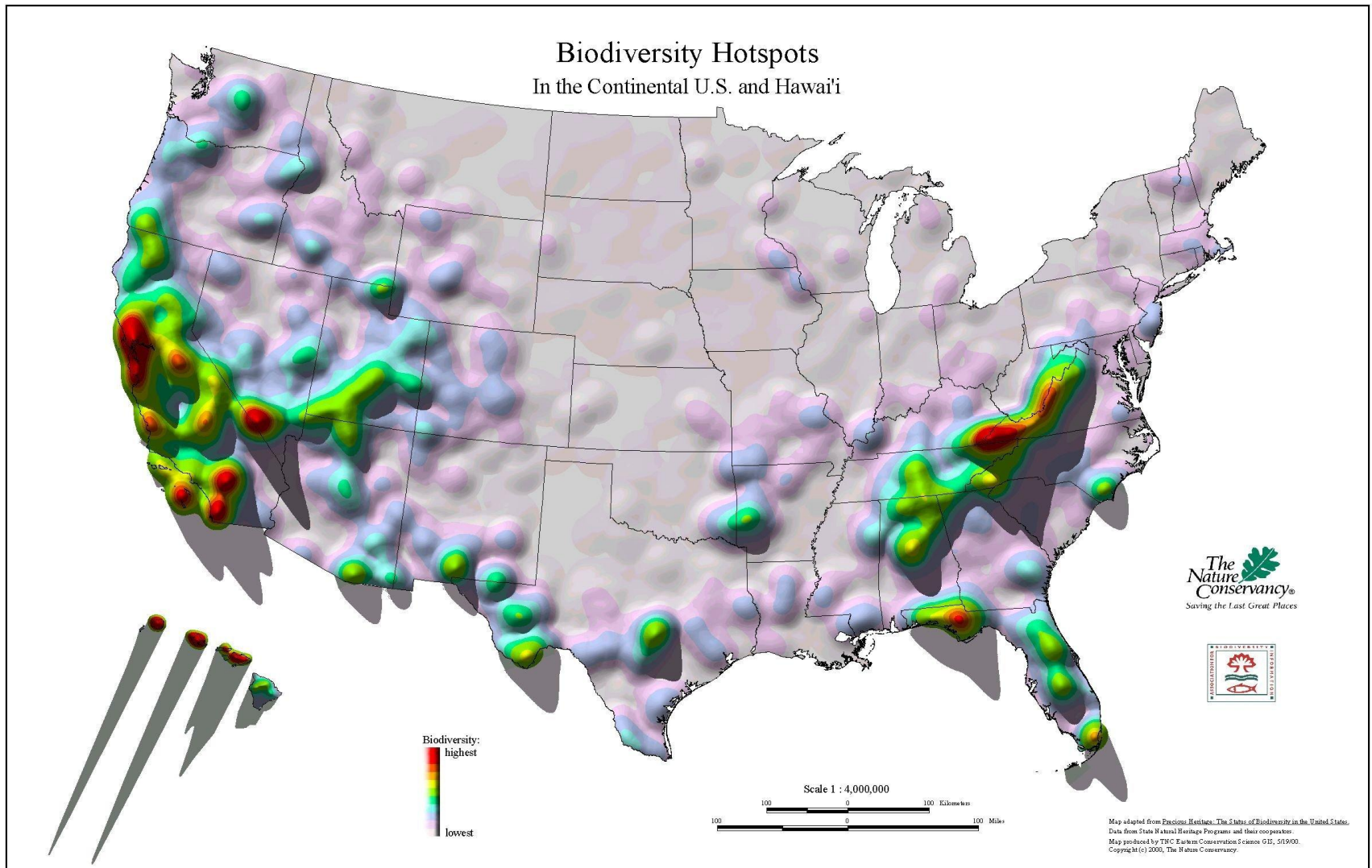
Source: American Rivers



# Biodiversity Hotspots

(most species, biggest threats)

Source: The Nature Conservancy



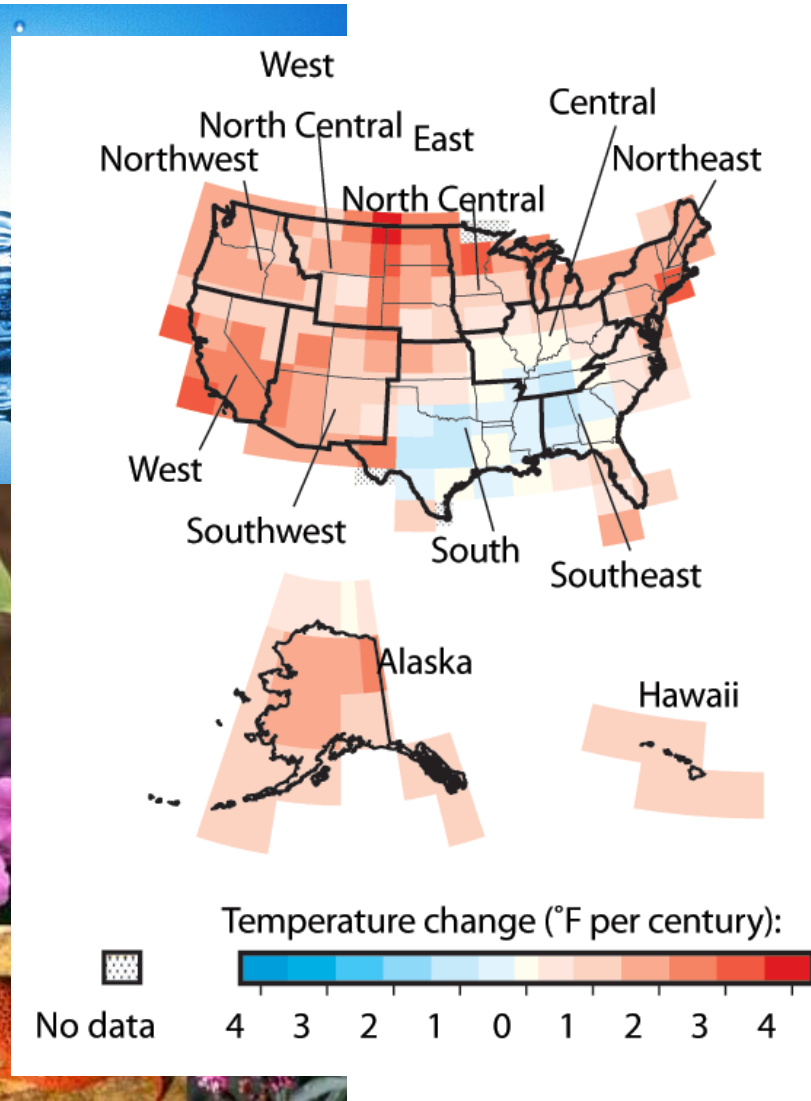


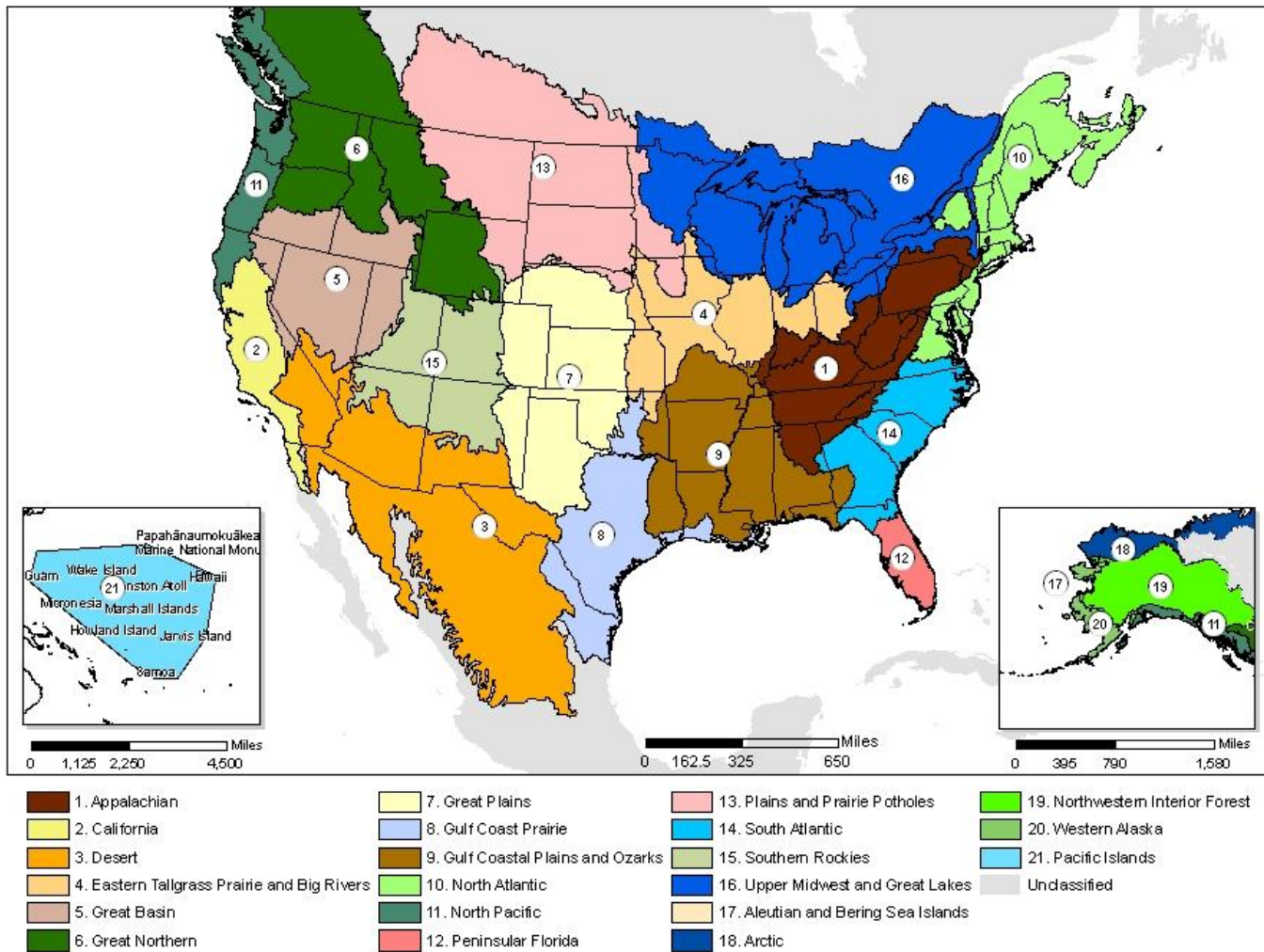
# North American Wildlife Corridors

Source: The Wildlands Project



# Climate Change





# America's Great Outdoors: 21 Landscape Conservation Cooperatives USFWS



# Roundtable on the Crown of the Continent





# Where is the Crown?



# Naming the Landscape

George Bird Grinnell coined  
the term  
“Crown of the Continent”

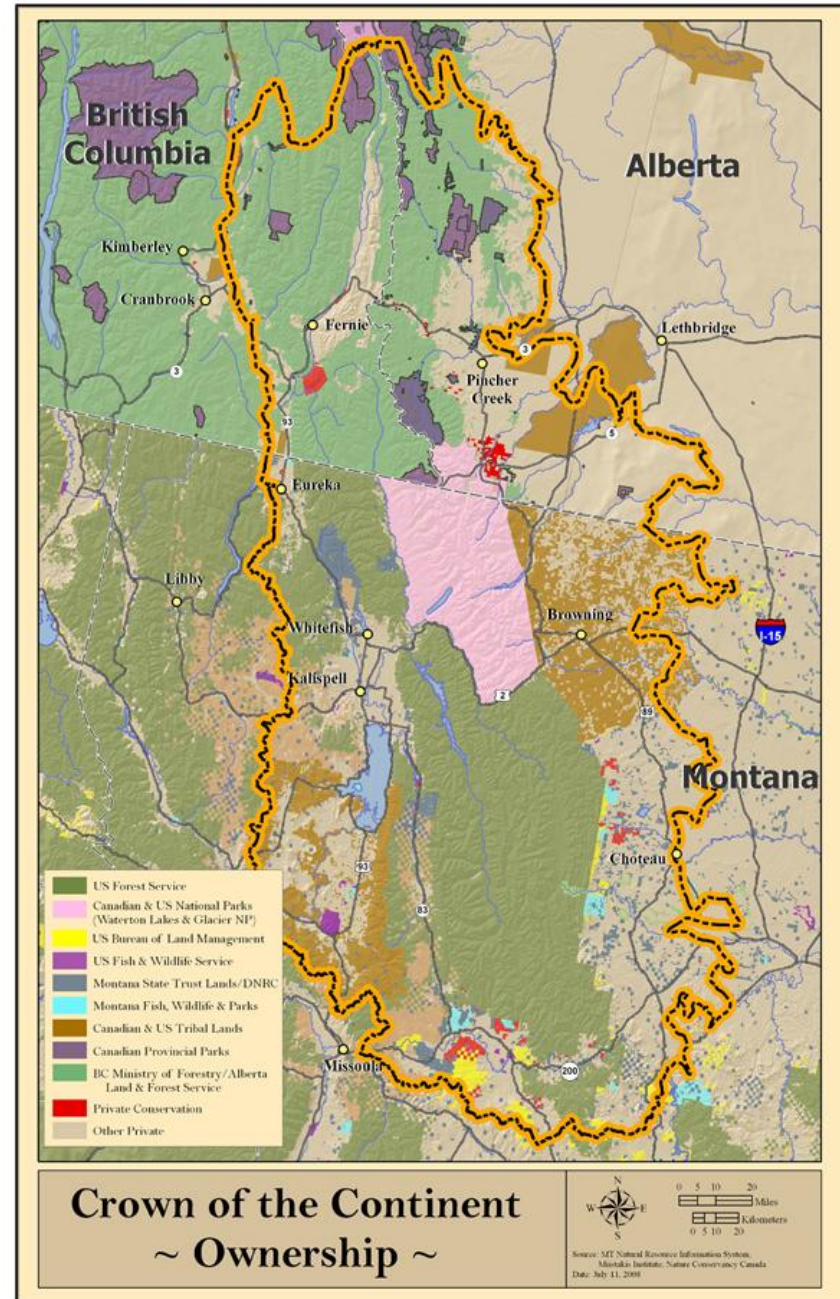
Blackfeet Nation called this  
area the  
“Backbone of the World”





# The Place

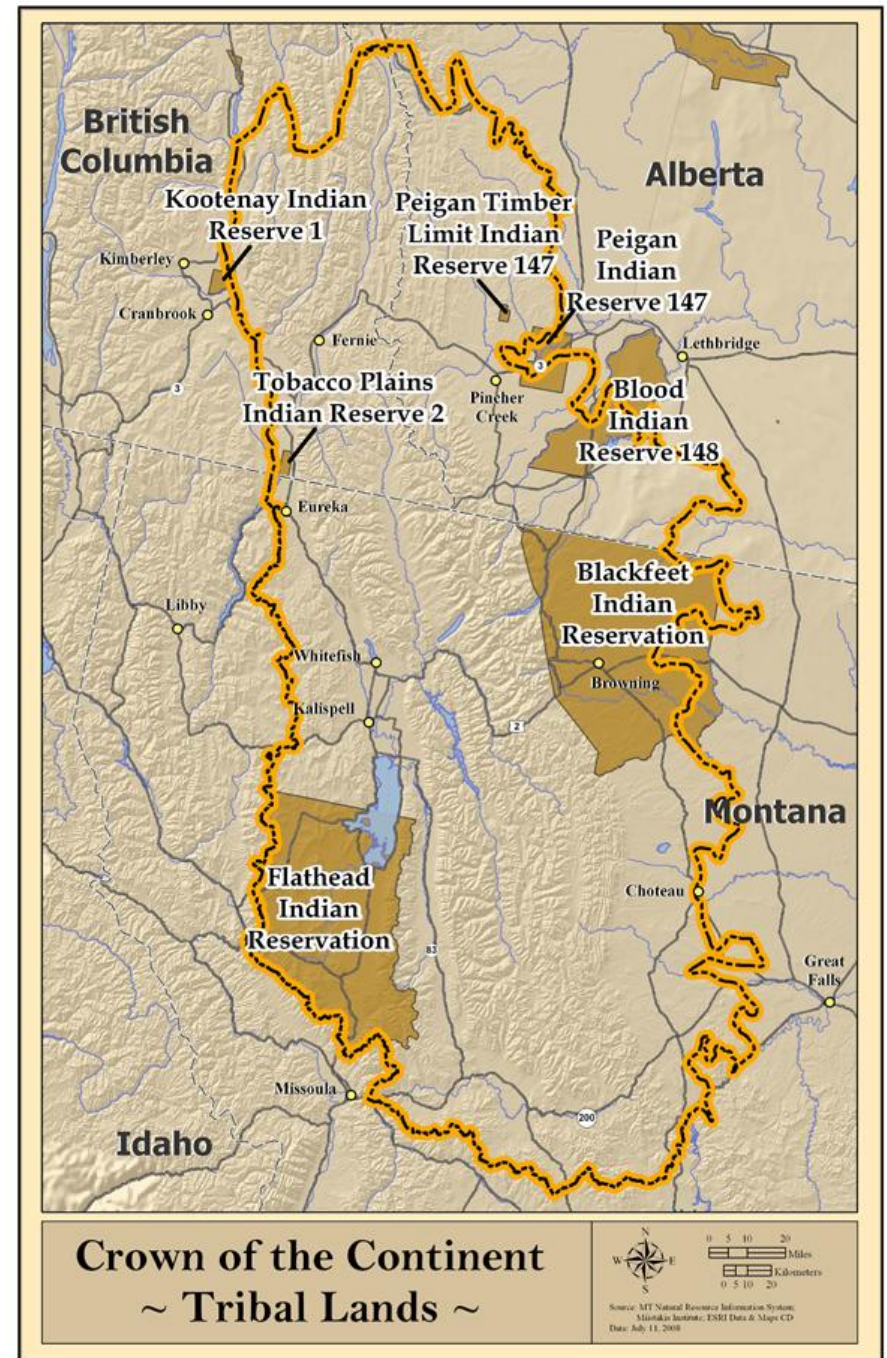
- 18 million acre intact eco-region
- 83% of the land in public ownership
- Headwaters for 3 oceans
- 4 ecosystems converge
  - Old-growth cedar-hemlock rain forests in the west
  - Native short-grass prairies in the east
  - High alpine meadows
  - Variations north and south





# First Nations

The Crown is nested in a much larger territorial homeland

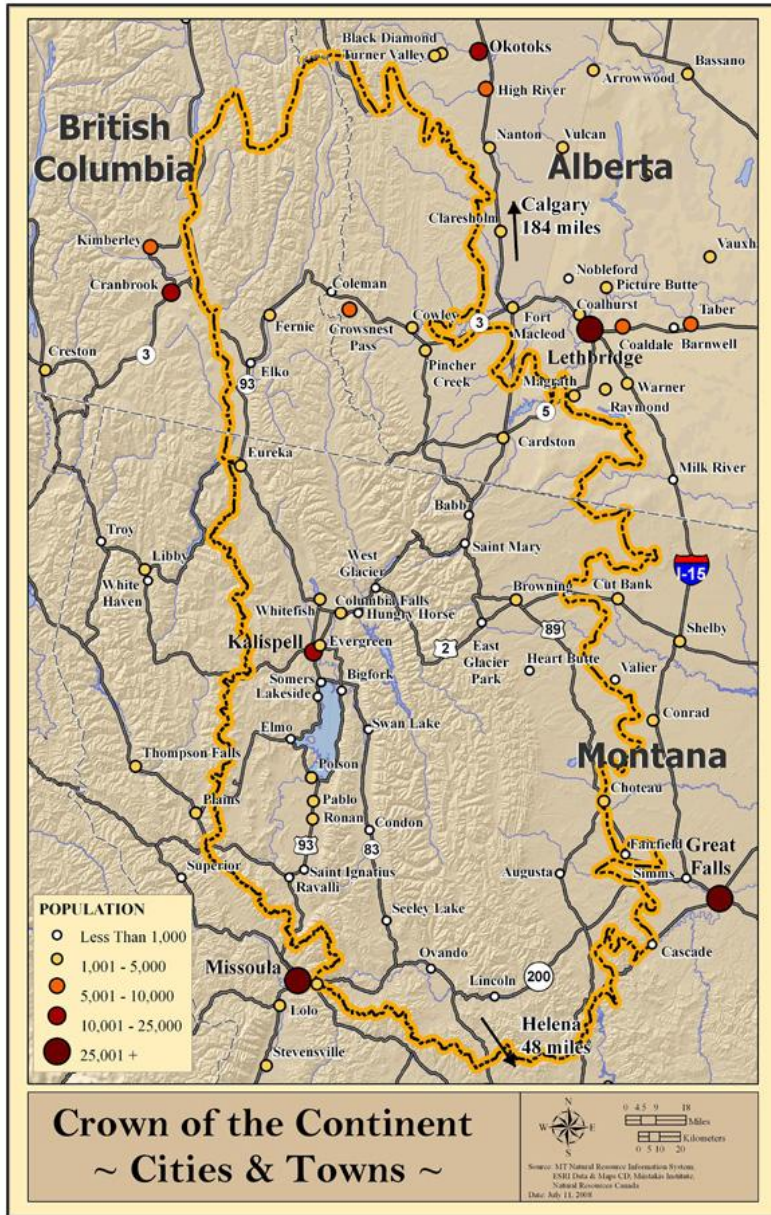




# Communities

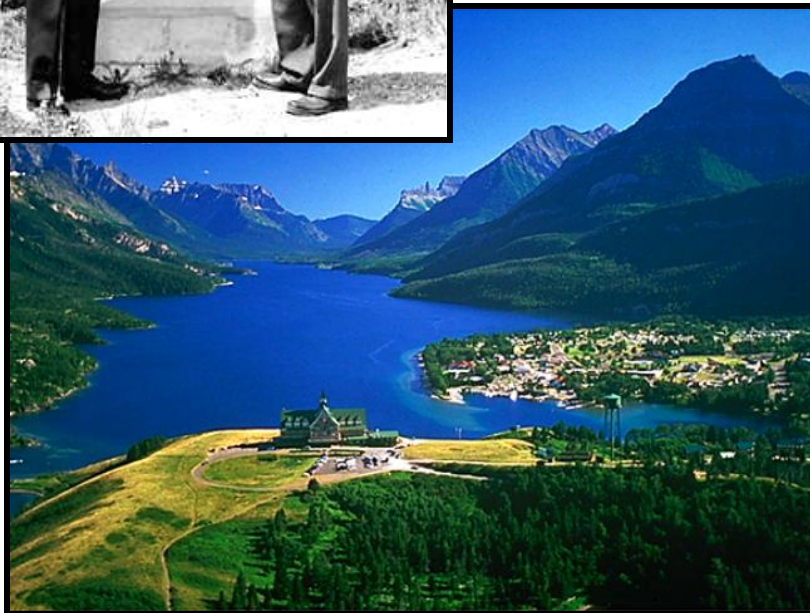
About 200,000 people in the Crown

Over 1 million in the surrounding area





# Special Designations



- 2 national parks
- 1st international peace park
- Biosphere reserve
- 3 Wild and Scenic Rivers
- 5 wilderness areas
- 5 endangered species

# Richest biodiversity of plant and animal life in North America

- 1200 vascular plants
- 16 species of carnivores





# Threats to People and Land

- Energy and resource development
- Residential/commercial development
- Economic stagnation/transformation
- Habitat fragmentation
- Climate change
- Wildfire management

## Capacity to Respond

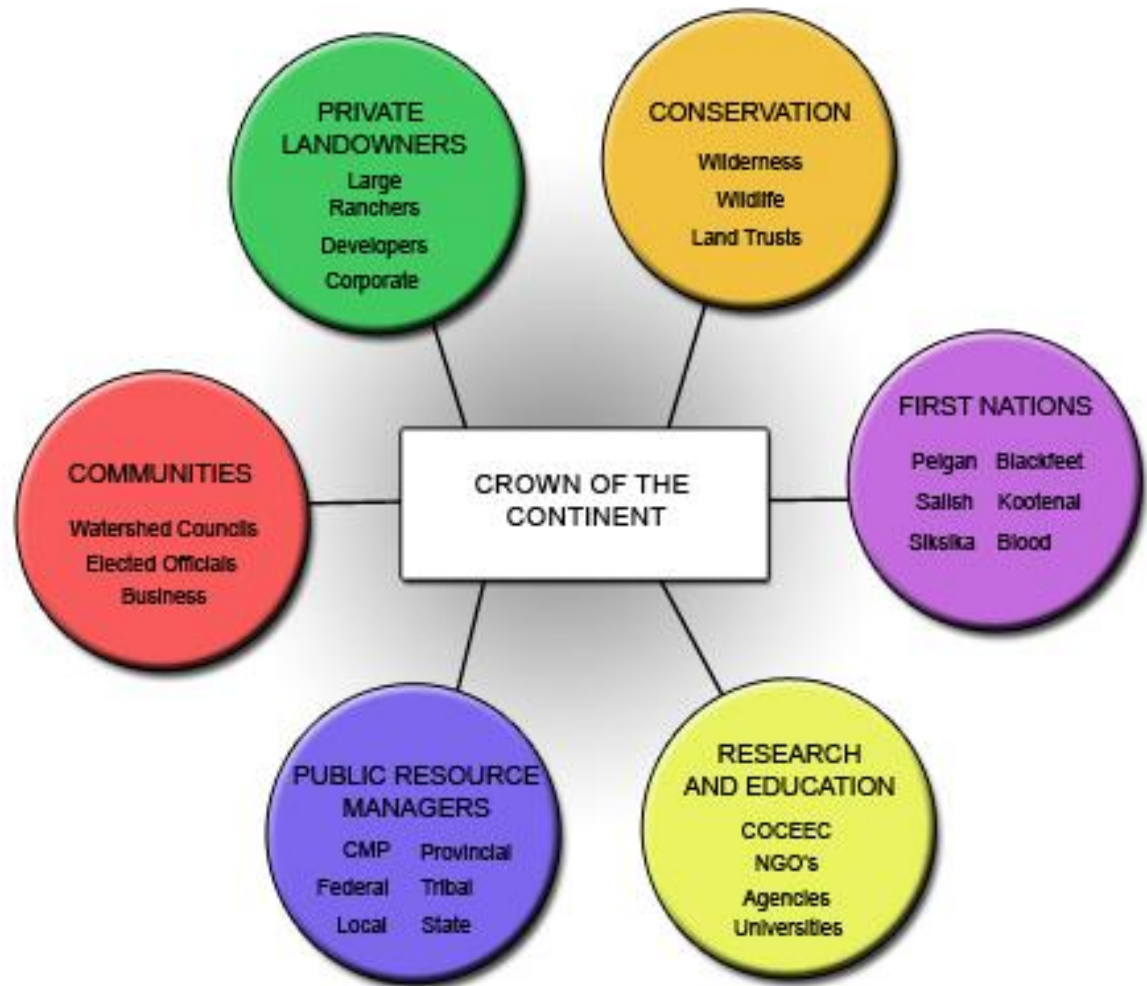
- Lack of regional identity
- Fragmented efforts & jurisdictions
- BUT, an opportunity to be proactive
  - Employ both bottom-up and top-down solutions and governance







## Roundtable on the Crown of the Continent



## Contact/more information

Armando Carbonell

Chairman, Department of Planning and Urban Form  
Lincoln Institute of Land Policy

113 Brattle Street

Cambridge, MA 02138

617-661-3016

[email@lincolninst.edu](mailto:email@lincolninst.edu)

Website: [www.lincolninst.edu](http://www.lincolninst.edu)